



Pradnya Niketan Education Society's
**NAGESH KARAJAGI ORCHID COLLEGE OF
ENGINEERING & TECHNOLOGY, SOLAPUR**

NAAC Accredited, Approved by AICTE, New Delhi & Affiliated to DBATU, Lonere
E-mail : office@orchidengg.ac.in, Website : www.orchidengg.ac.in, Phone No. 9423084363
Post Box No. 154, Gut No. 16, Solapur-Tuljapur Road, Tale Hipparaga, Solapur- 413 002.

Criterion 7- Institutional Values and Best Practices

7.1.2. Environmental Consciousness and Sustainability and Divyangjan friendly initiatives

	Facilities	Page No.
Geo-tagged Photographs of the Facilities	1) Alternate sources of Energy & Energy conservation measures	2-15
	2) Management of the various types of Degradable and non-degradable waste	16-20
	3) Water Conservation	21-27
	4) Green Campus Initiatives	28-35
	5) Disabled friendly and barrier friendly environment	36-42





Pradnya Niketan Education Society's

NAGESH KARAJAGI *ORCHID* COLLEGE OF ENGINEERING & TECHNOLOGY, SOLAPUR

NAAC Accredited, Approved by AICTE, New Delhi & Affiliated to DBATU, Lonere

E-mail : office@orchidengg.ac.in, Website : www.orchidengg.ac.in, Phone No. 9423084363

Post Box No. 154, Gut No. 16, Solapur-Tuljapur Road, Tale Hipparaga, Solapur- 413 002.

1) Alternate sources of Energy & Energy conservation measures





Pradnya Niketan Education Society's
**NAGESH KARAJAGI ORCHID COLLEGE OF
ENGINEERING & TECHNOLOGY, SOLAPUR**

NAAC Accredited, Approved by AICTE, New Delhi & Affiliated to DBATU, Lonere
E-mail : office@orchidengg.ac.in, Website : www.orchidengg.ac.in, Phone No. 9423084363
Post Box No. 154, Gut No. 16, Solapur-Tuljapur Road, Tale Hipparaga, Solapur- 413 002.



Figure 1: 36 KW Solar Power Generation System



Figure 2: 36 KW Solar Power Generation System





Pradnya Niketan Education Society's
**NAGESH KARAJAGI ORCHID COLLEGE OF
ENGINEERING & TECHNOLOGY, SOLAPUR**

NAAC Accredited, Approved by AICTE, New Delhi & Affiliated to DBATU, Lonere
E-mail : office@orchidengg.ac.in, Website : www.orchidengg.ac.in, Phone No. 9423084363
Post Box No. 154, Gut No. 16, Solapur-Tuljapur Road, Tale Hipparaga, Solapur- 413 002.

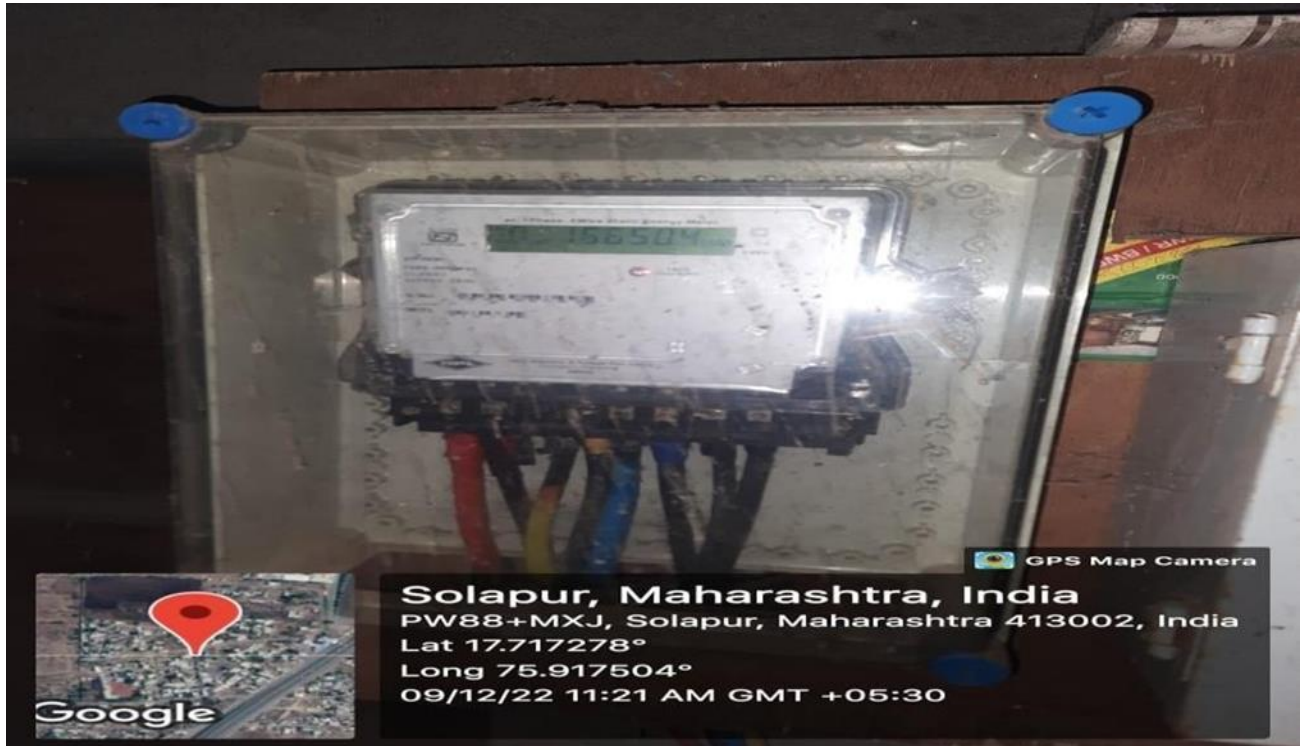


Figure 3: Net metering (Generated excess electricity from Solar Power Generation System sell back to the Maharashtra State Electricity Distribution Company)





Pradnya Niketan Education Society's
**NAGESH KARAJAGI ORCHID COLLEGE OF
ENGINEERING & TECHNOLOGY, SOLAPUR**

NAAC Accredited, Approved by AICTE, New Delhi & Affiliated to DBATU, Lonere
E-mail : office@orchidengg.ac.in, Website : www.orchidengg.ac.in, Phone No. 9423084363
Post Box No. 154, Gut No. 16, Solapur-Tuljapur Road, Tale Hipparaga, Solapur- 413 002.



Figure 4: RO Plant operated on Solar Power Generation System



Figure 5: Lawn Sprinkler system operated on Solar Power Generation System





Pradnya Niketan Education Society's
**NAGESH KARAJAGI ORCHID COLLEGE OF
ENGINEERING & TECHNOLOGY, SOLAPUR**

NAAC Accredited, Approved by AICTE, New Delhi & Affiliated to DBATU, Lonere
E-mail : office@orchidengg.ac.in, Website : www.orchidengg.ac.in, Phone No. 9423084363
Post Box No. 154, Gut No. 16, Solapur-Tuljapur Road, Tale Hipparaga, Solapur- 413 002.



Figure 6: LED Bulbs for saving energy



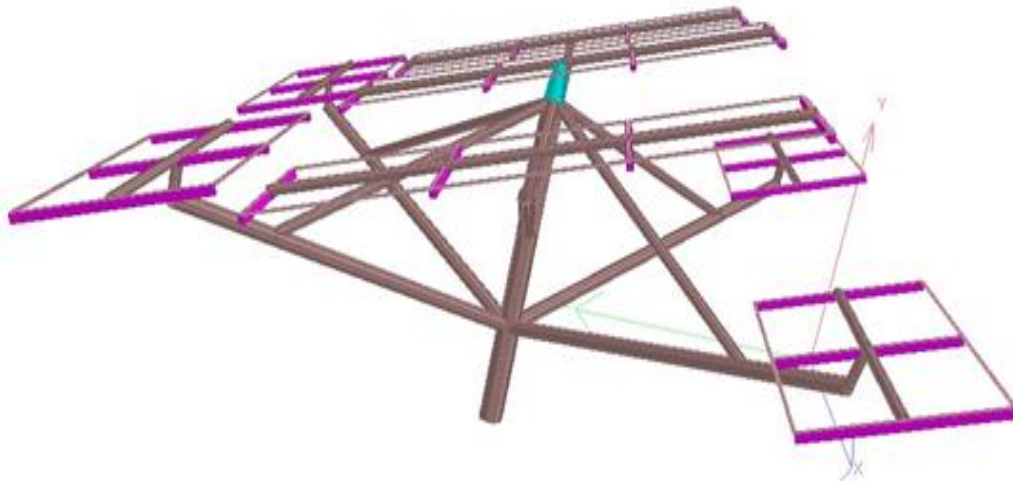
Figure 7: LED Bulbs for saving energy





Pradnya Niketan Education Society's
**NAGESH KARAJAGI ORCHID COLLEGE OF
ENGINEERING & TECHNOLOGY, SOLAPUR**

NAAC Accredited, Approved by AICTE, New Delhi & Affiliated to DBATU, Lonere
E-mail : office@orchidengg.ac.in, Website : www.orchidengg.ac.in, Phone No. 9423084363
Post Box No. 154, Gut No. 16, Solapur-Tuljapur Road, Tale Hipparaga, Solapur- 413 002.



Solar Project- Community Based Solar Tree





Pradnya Niketan Education Society's
**NAGESH KARAJAGI ORCHID COLLEGE OF
ENGINEERING & TECHNOLOGY, SOLAPUR**

NAAC Accredited, Approved by AICTE, New Delhi & Affiliated to DBATU, Lonere
E-mail : office@orchidengg.ac.in, Website : www.orchidengg.ac.in, Phone No. 9423084363
Post Box No. 154, Gut No. 16, Solapur-Tuljapur Road, Tale Hipparaga, Solapur- 413 002.

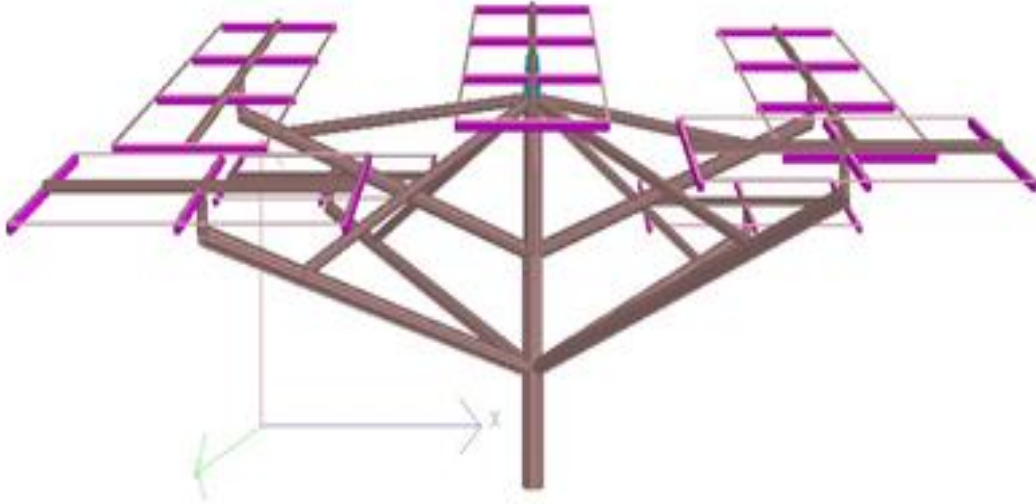


Fig No 8: 3D Modelling of Solar Tree of 13.6KWHr Energy Generation



Fig No 9: Prototype Model of Solar Tree





Pradnya Niketan Education Society's
**NAGESH KARAJAGI ORCHID COLLEGE OF
ENGINEERING & TECHNOLOGY, SOLAPUR**

NAAC Accredited, Approved by AICTE, New Delhi & Affiliated to DBATU, Lonere
E-mail : office@orchidengg.ac.in, Website : www.orchidengg.ac.in, Phone No. 9423084363
Post Box No. 154, Gut No. 16, Solapur-Tuljapur Road, Tale Hipparaga, Solapur- 413 002.



Fig No 10: Prototype Model of Solar Tree in Dassault Systems Pune Exhibition





Pradnya Niketan Education Society's
**NAGESH KARAJAGI ORCHID COLLEGE OF
ENGINEERING & TECHNOLOGY, SOLAPUR**

NAAC Accredited, Approved by AICTE, New Delhi & Affiliated to DBATU, Lonere
E-mail : office@orchidengg.ac.in, Website : www.orchidengg.ac.in, Phone No. 9423084363
Post Box No. 154, Gut No. 16, Solapur-Tuljapur Road, Tale Hipparaga, Solapur- 413 002.

Project Title:- DESIGN AND FABRICATION OF SOLAR DEHYDRATION SYSTEM



Fig.11: Experimental Setup of Solar Dehydration





Pradnya Niketan Education Society's
**NAGESH KARAJAGI ORCHID COLLEGE OF
ENGINEERING & TECHNOLOGY, SOLAPUR**

NAAC Accredited, Approved by AICTE, New Delhi & Affiliated to DBATU, Lonere
E-mail : office@orchidengg.ac.in, Website : www.orchidengg.ac.in, Phone No. 9423084363
Post Box No. 154, Gut No. 16, Solapur-Tuljapur Road, Tale Hipparaga, Solapur- 413 002.

**PROJECT TITLE: FABRICATION AND ANALYSIS OF SOLAR OPERATED MILK
PASTEURIZATION SYSTEM**



Fig. 12: Experiment Setup of Solar-Operated Milk Pasteurization System





Pradnya Niketan Education Society's
**NAGESH KARAJAGI ORCHID COLLEGE OF
ENGINEERING & TECHNOLOGY, SOLAPUR**

NAAC Accredited, Approved by AICTE, New Delhi & Affiliated to DBATU, Lonere
E-mail : office@orchidengg.ac.in, Website : www.orchidengg.ac.in, Phone No. 9423084363
Post Box No. 154, Gut No. 16, Solapur-Tuljapur Road, Tale Hipparaga, Solapur- 413 002.

Project Title: Design of Rooftop Solar System for Pump Industry



Fig. 13: Design of Rooftop Solar System for Pump Industry

From Left Kusuma Mane, Rupali Sutar, Prof.I.I.Mujawar, Varalaxmi Maile, Sonali Vasamale.

Project Guide: Prof. I. I. Mujawar





Pradnya Niketan Education Society's
**NAGESH KARAJAGI ORCHID COLLEGE OF
ENGINEERING & TECHNOLOGY, SOLAPUR**

NAAC Accredited, Approved by AICTE, New Delhi & Affiliated to DBATU, Lonere
E-mail : office@orchidengg.ac.in, Website : www.orchidengg.ac.in, Phone No. 9423084363
Post Box No. 154, Gut No. 16, Solapur-Tuljapur Road, Tale Hipparaga, Solapur- 413 002.

Project Title: Energy Audit and Design of Solar System for Textile Mill



Fig. 14: Energy Audit and Design of Solar System for Textile Mill

From Left Manisha Awar, Kharatmal Pooja, Prof. S.S.Shaha, Halole Vijayalaxmi, Gaddam Yogeshwari





Pradnya Niketan Education Society's
**NAGESH KARAJAGI ORCHID COLLEGE OF
ENGINEERING & TECHNOLOGY, SOLAPUR**

NAAC Accredited, Approved by AICTE, New Delhi & Affiliated to DBATU, Lonere
E-mail : office@orchidengg.ac.in, Website : www.orchidengg.ac.in, Phone No. 9423084363
Post Box No. 154, Gut No. 16, Solapur-Tuljapur Road, Tale Hipparaga, Solapur- 413 002.



Figure 15: Solar Lab



Figure 16: Solar Lab





Pradnya Niketan Education Society's
**NAGESH KARAJAGI ORCHID COLLEGE OF
ENGINEERING & TECHNOLOGY, SOLAPUR**

NAAC Accredited, Approved by AICTE, New Delhi & Affiliated to DBATU, Lonere
E-mail : office@orchidengg.ac.in, Website : www.orchidengg.ac.in, Phone No. 9423084363
Post Box No. 154, Gut No. 16, Solapur-Tuljapur Road, Tale Hipparaga, Solapur- 413 002.



Fig 17: Solar Water Heater installed in Boys Hostel's top floor which helps in reducing electricity consumption



Fig 18: Solar Water Heater installed in Boys Hostel's top floor which helps in reducing electricity consumption





Pradnya Niketan Education Society's

NAGESH KARAJAGI *ORCHID* COLLEGE OF ENGINEERING & TECHNOLOGY, SOLAPUR

NAAC Accredited, Approved by AICTE, New Delhi & Affiliated to DBATU, Lonere

E-mail : office@orchidengg.ac.in, Website : www.orchidengg.ac.in, Phone No. 9423084363

Post Box No. 154, Gut No. 16, Solapur-Tuljapur Road, Tale Hipparaga, Solapur- 413 002.

2) Management of the various types of Degradable and non-degradable waste





Pradnya Niketan Education Society's
**NAGESH KARAJAGI ORCHID COLLEGE OF
ENGINEERING & TECHNOLOGY, SOLAPUR**

NAAC Accredited, Approved by AICTE, New Delhi & Affiliated to DBATU, Lonere
E-mail : office@orchidengg.ac.in, Website : www.orchidengg.ac.in, Phone No. 9423084363
Post Box No. 154, Gut No. 16, Solapur-Tuljapur Road, Tale Hipparaga, Solapur- 413 002.



Figure 19: Dustbin for Dry and Wet Waste near Xerox centre



Figure 20: Dustbin near Mech-civil Garden





Pradnya Niketan Education Society's
**NAGESH KARAJAGI ORCHID COLLEGE OF
ENGINEERING & TECHNOLOGY, SOLAPUR**

NAAC Accredited, Approved by AICTE, New Delhi & Affiliated to DBATU, Lonere
E-mail : office@orchidengg.ac.in, Website : www.orchidengg.ac.in, Phone No. 9423084363
Post Box No. 154, Gut No. 16, Solapur-Tuljapur Road, Tale Hipparaga, Solapur- 413 002.



Figure 21: Dustbin ground floor Civil



Figure 22: Disposal of Dry and Wet Waste





Pradnya Niketan Education Society's
**NAGESH KARAJAGI ORCHID COLLEGE OF
ENGINEERING & TECHNOLOGY, SOLAPUR**

NAAC Accredited, Approved by AICTE, New Delhi & Affiliated to DBATU, Lonere
E-mail : office@orchidengg.ac.in, Website : www.orchidengg.ac.in, Phone No. 9423084363
Post Box No. 154, Gut No. 16, Solapur-Tuljapur Road, Tale Hipparaga, Solapur- 413 002.



Figure 23: Degradable (Decomposition) Waste



Figure 24: Degradable (Decomposition) Waste





Pradnya Niketan Education Society's
**NAGESH KARAJAGI ORCHID COLLEGE OF
ENGINEERING & TECHNOLOGY, SOLAPUR**

NAAC Accredited, Approved by AICTE, New Delhi & Affiliated to DBATU, Lonere
E-mail : office@orchidengg.ac.in, Website : www.orchidengg.ac.in, Phone No. 9423084363
Post Box No. 154, Gut No. 16, Solapur-Tuljapur Road, Tale Hipparaga, Solapur- 413 002.



Figure 25: Non-Degradable (Decomposition) Waste





Pradnya Niketan Education Society's
**NAGESH KARAJAGI *ORCHID* COLLEGE OF
ENGINEERING & TECHNOLOGY, SOLAPUR**

NAAC Accredited, Approved by AICTE, New Delhi & Affiliated to DBATU, Lonere

E-mail : office@orchidengg.ac.in, Website : www.orchidengg.ac.in, Phone No. 9423084363

Post Box No. 154, Gut No. 16, Solapur-Tuljapur Road, Tale Hipparaga, Solapur- 413 002.

3) Water Conservation





Pradnya Niketan Education Society's
**NAGESH KARAJAGI ORCHID COLLEGE OF
ENGINEERING & TECHNOLOGY, SOLAPUR**

NAAC Accredited, Approved by AICTE, New Delhi & Affiliated to DBATU, Lonere
E-mail : office@orchidengg.ac.in, Website : www.orchidengg.ac.in, Phone No. 9423084363
Post Box No. 154, Gut No. 16, Solapur-Tuljapur Road, Tale Hipparaga, Solapur- 413 002.



Figure 26: “Recycle and Reuse of Waste Water” (80,000 litre of waste water is treated and reused for gardening)



Figure 27: “Recycle and Reuse of Waste Water” (80,000 litre of waste water is treated and reused for gardening)





Pradnya Niketan Education Society's
**NAGESH KARAJAGI ORCHID COLLEGE OF
ENGINEERING & TECHNOLOGY, SOLAPUR**

NAAC Accredited, Approved by AICTE, New Delhi & Affiliated to DBATU, Lonere
E-mail : office@orchidengg.ac.in, Website : www.orchidengg.ac.in, Phone No. 9423084363
Post Box No. 154, Gut No. 16, Solapur-Tuljapur Road, Tale Hipparaga, Solapur- 413 002.



Figure 28: Drip Irrigation



Figure 29: Drip Irrigation





Pradnya Niketan Education Society's
**NAGESH KARAJAGI ORCHID COLLEGE OF
ENGINEERING & TECHNOLOGY, SOLAPUR**

NAAC Accredited, Approved by AICTE, New Delhi & Affiliated to DBATU, Lonere
E-mail : office@orchidengg.ac.in, Website : www.orchidengg.ac.in, Phone No. 9423084363
Post Box No. 154, Gut No. 16, Solapur-Tuljapur Road, Tale Hipparaga, Solapur- 413 002.



Figure 30: Through Sprinkler System water is conserved



Figure 31: Through Sprinkler System water is conserved





Pradnya Niketan Education Society's
**NAGESH KARAJAGI ORCHID COLLEGE OF
ENGINEERING & TECHNOLOGY, SOLAPUR**

NAAC Accredited, Approved by AICTE, New Delhi & Affiliated to DBATU, Lonere
E-mail : office@orchidengg.ac.in, Website : www.orchidengg.ac.in, Phone No. 9423084363
Post Box No. 154, Gut No. 16, Solapur-Tuljapur Road, Tale Hipparaga, Solapur- 413 002.



Figure 32: Recycle and Reuse of waste water for gardening



Figure 33: Recycle and Reuse of waste water for gardening





Pradnya Niketan Education Society's
**NAGESH KARAJAGI ORCHID COLLEGE OF
ENGINEERING & TECHNOLOGY, SOLAPUR**

NAAC Accredited, Approved by AICTE, New Delhi & Affiliated to DBATU, Lonere
E-mail : office@orchidengg.ac.in, Website : www.orchidengg.ac.in, Phone No. 9423084363
Post Box No. 154, Gut No. 16, Solapur-Tuljapur Road, Tale Hipparaga, Solapur- 413 002.



Figure 34: Recycle and Reuse of waste water for gardening



Figure 35: Recycle and Reuse of waste water for gardening





Pradnya Niketan Education Society's
**NAGESH KARAJAGI ORCHID COLLEGE OF
ENGINEERING & TECHNOLOGY, SOLAPUR**

NAAC Accredited, Approved by AICTE, New Delhi & Affiliated to DBATU, Lonere
E-mail : office@orchidengg.ac.in, Website : www.orchidengg.ac.in, Phone No. 9423084363
Post Box No. 154, Gut No. 16, Solapur-Tuljapur Road, Tale Hipparaga, Solapur- 413 002.



Figure 36: Side drains to collect rain water



Figure 37: Side drains to collect rain water





Pradnya Niketan Education Society's
**NAGESH KARAJAGI *ORCHID* COLLEGE OF
ENGINEERING & TECHNOLOGY, SOLAPUR**

NAAC Accredited, Approved by AICTE, New Delhi & Affiliated to DBATU, Lonere
E-mail : office@orchidengg.ac.in, Website : www.orchidengg.ac.in, Phone No. 9423084363
Post Box No. 154, Gut No. 16, Solapur-Tuljapur Road, Tale Hipparaga, Solapur- 413 002.

4) Green Campus Initiatives





Pradnya Niketan Education Society's
**NAGESH KARAJAGI ORCHID COLLEGE OF
ENGINEERING & TECHNOLOGY, SOLAPUR**

NAAC Accredited, Approved by AICTE, New Delhi & Affiliated to DBATU, Lonere
E-mail : office@orchidengg.ac.in, Website : www.orchidengg.ac.in, Phone No. 9423084363
Post Box No. 154, Gut No. 16, Solapur-Tuljapur Road, Tale Hipparaga, Solapur- 413 002.



Figure 38: Most of our students are using Public transport which reduces carbon emission by Individual Students

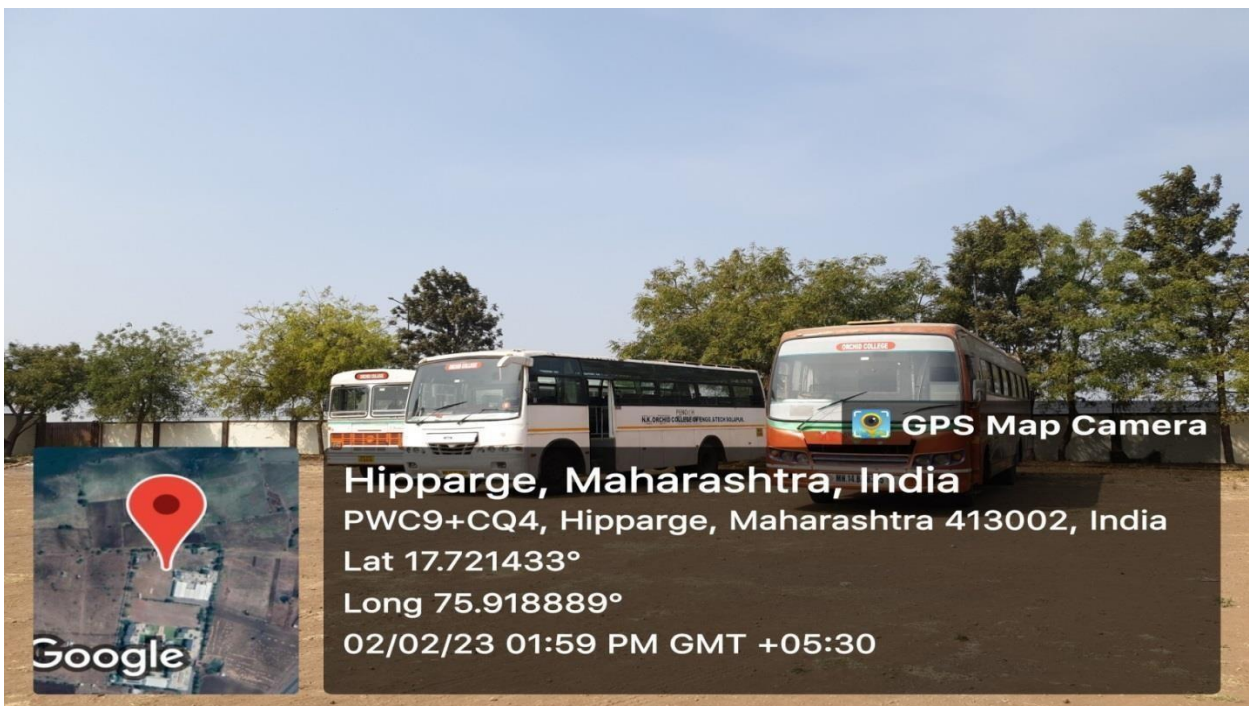


Figure 39: Most of our students are using Public transport which reduces carbon emission by Individual Students



Pradnya Niketan Education Society's
**NAGESH KARAJAGI ORCHID COLLEGE OF
ENGINEERING & TECHNOLOGY, SOLAPUR**

NAAC Accredited, Approved by AICTE, New Delhi & Affiliated to DBATU, Lonere
E-mail : office@orchidengg.ac.in, Website : www.orchidengg.ac.in, Phone No. 9423084363
Post Box No. 154, Gut No. 16, Solapur-Tuljapur Road, Tale Hipparaga, Solapur- 413 002.



Figure 40: “Recycle and Reuse of Waste Water” (80,000 litre of waste water is treated and reused for gardening)



Figure 41: “Recycle and Reuse of Waste Water” (80,000 litre of waste water is treated and reused for gardening)





Pradnya Niketan Education Society's
**NAGESH KARAJAGI ORCHID COLLEGE OF
ENGINEERING & TECHNOLOGY, SOLAPUR**

NAAC Accredited, Approved by AICTE, New Delhi & Affiliated to DBATU, Lonere
E-mail : office@orchidengg.ac.in, Website : www.orchidengg.ac.in, Phone No. 9423084363
Post Box No. 154, Gut No. 16, Solapur-Tuljapur Road, Tale Hipparaga, Solapur- 413 002.



Figure 42: Trees Planted in the Campus



Figure 43: Trees Planted in the Campus





Pradnya Niketan Education Society's
**NAGESH KARAJAGI ORCHID COLLEGE OF
ENGINEERING & TECHNOLOGY, SOLAPUR**

NAAC Accredited, Approved by AICTE, New Delhi & Affiliated to DBATU, Lonere
E-mail : office@orchidengg.ac.in, Website : www.orchidengg.ac.in, Phone No. 9423084363
Post Box No. 154, Gut No. 16, Solapur-Tuljapur Road, Tale Hipparaga, Solapur- 413 002.



Figure 44: Pedestrian Friendly Pathway



Figure 45: Pedestrian Friendly Pathway





Pradnya Niketan Education Society's
**NAGESH KARAJAGI ORCHID COLLEGE OF
ENGINEERING & TECHNOLOGY, SOLAPUR**

NAAC Accredited, Approved by AICTE, New Delhi & Affiliated to DBATU, Lonere
E-mail : office@orchidengg.ac.in, Website : www.orchidengg.ac.in, Phone No. 9423084363
Post Box No. 154, Gut No. 16, Solapur-Tuljapur Road, Tale Hipparaga, Solapur- 413 002.



Figure 46: E-Vehicle



Figure 47: E-Vehicle





Pradnya Niketan Education Society's
**NAGESH KARAJAGI ORCHID COLLEGE OF
ENGINEERING & TECHNOLOGY, SOLAPUR**

NAAC Accredited, Approved by AICTE, New Delhi & Affiliated to DBATU, Lonere
E-mail : office@orchidengg.ac.in, Website : www.orchidengg.ac.in, Phone No. 9423084363
Post Box No. 154, Gut No. 16, Solapur-Tuljapur Road, Tale Hipparaga, Solapur- 413 002.



Figure 48: Pipes attached to the roofs of the buildings



Figure 49: Pipes attached to the roofs of the buildings



Pradnya Niketan Education Society's
**NAGESH KARAJAGI ORCHID COLLEGE OF
ENGINEERING & TECHNOLOGY, SOLAPUR**

NAAC Accredited, Approved by AICTE, New Delhi & Affiliated to DBATU, Lonere
E-mail : office@orchidengg.ac.in, Website : www.orchidengg.ac.in, Phone No. 9423084363
Post Box No. 154, Gut No. 16, Solapur-Tuljapur Road, Tale Hipparaga, Solapur- 413 002.



Figure 50: Rain water collected through the pipes is used to water the plants

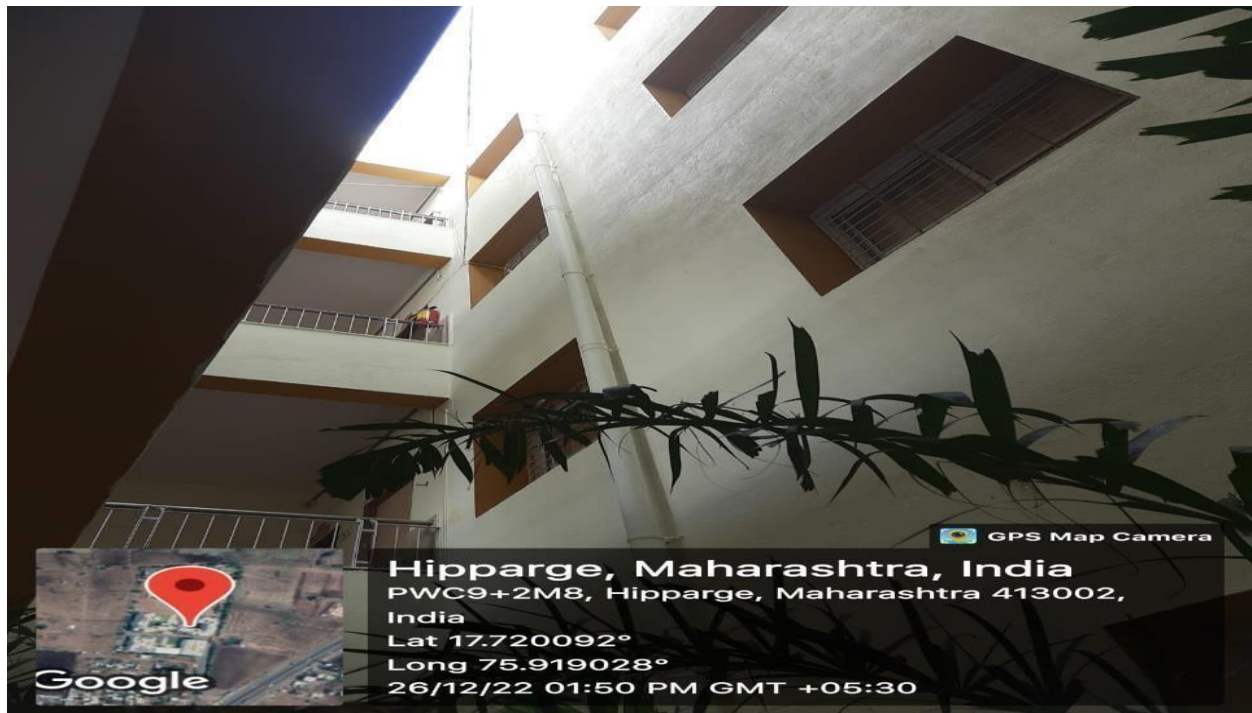


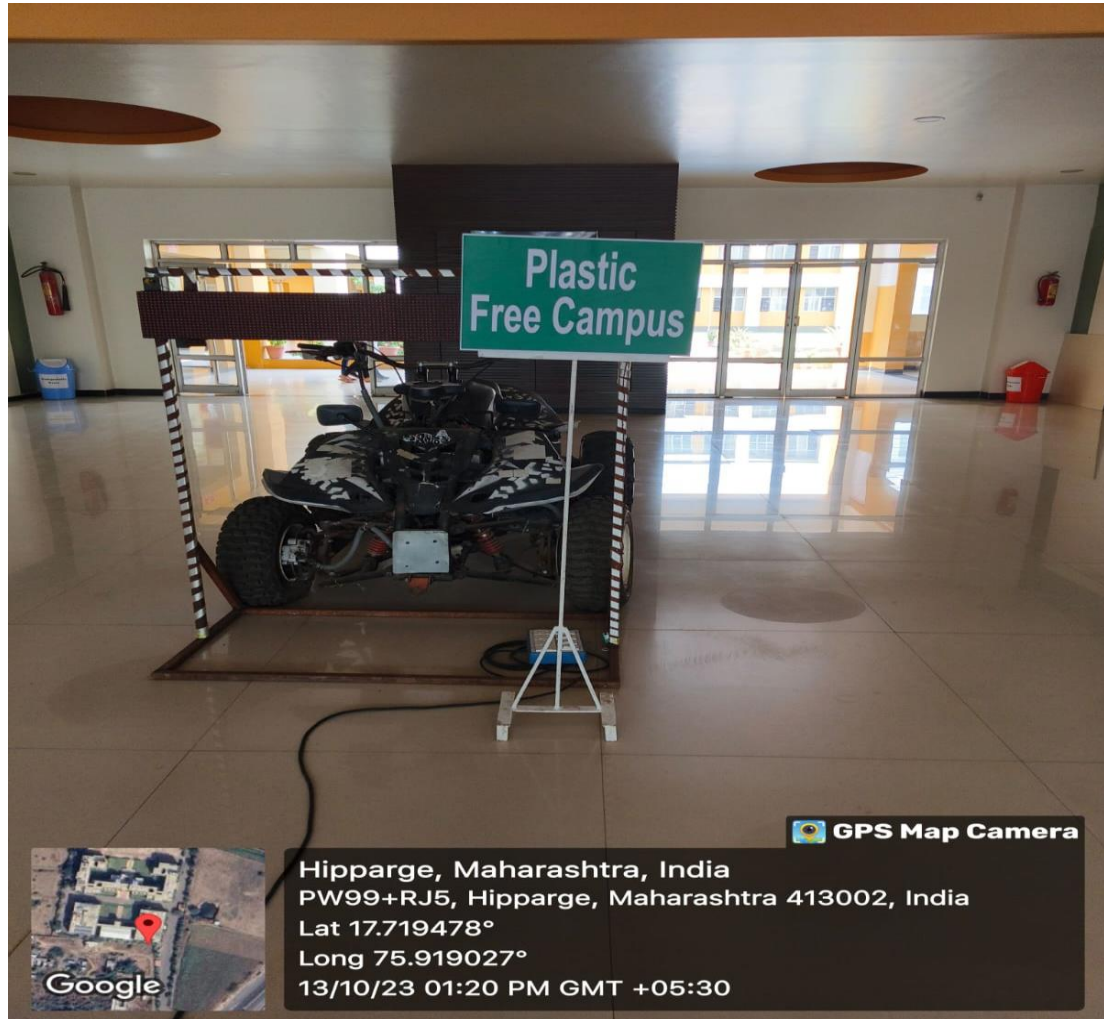
Figure 51: Rain Water Harvesting





Pradnya Niketan Education Society's
**NAGESH KARAJAGI ORCHID COLLEGE OF
ENGINEERING & TECHNOLOGY, SOLAPUR**

NAAC Accredited, Approved by AICTE, New Delhi & Affiliated to DBATU, Lonere
E-mail : office@orchidengg.ac.in, Website : www.orchidengg.ac.in, Phone No. 9423084363
Post Box No. 154, Gut No. 16, Solapur-Tuljapur Road, Tale Hipparaga, Solapur- 413 002.



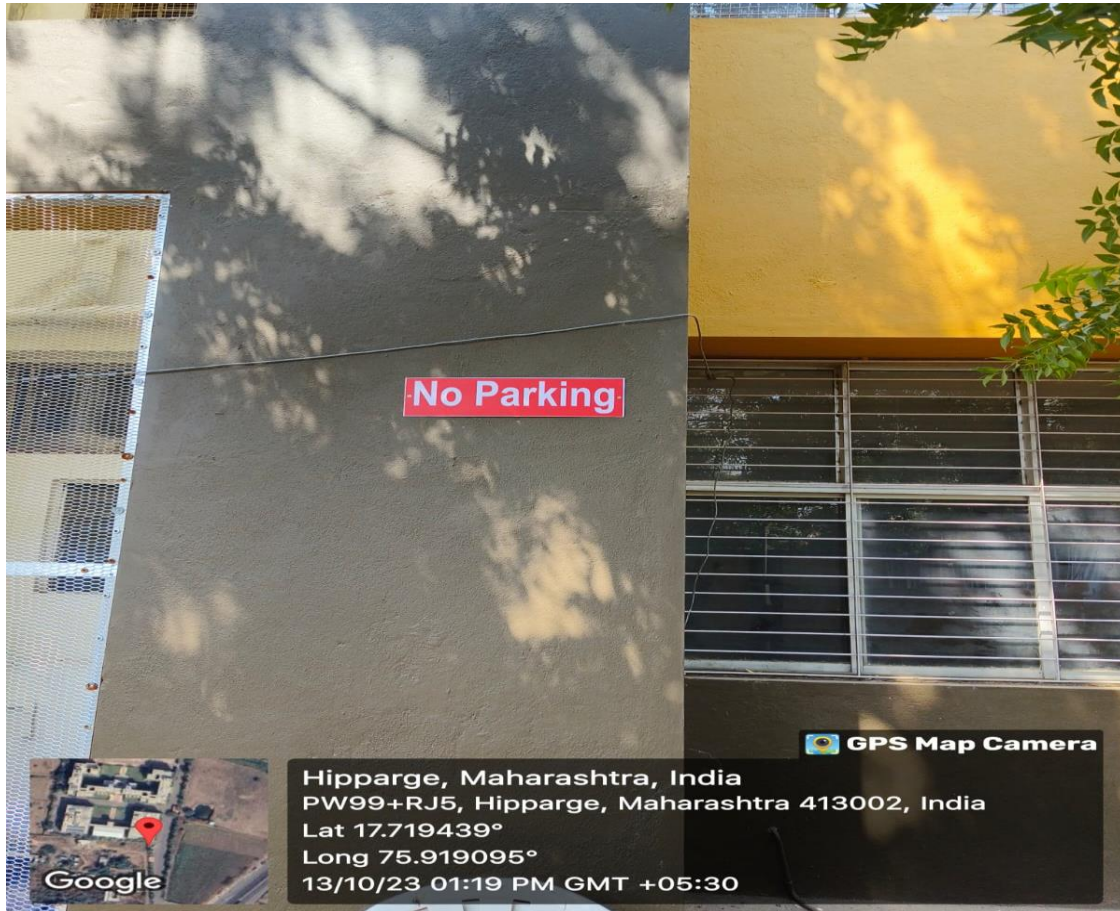
Sign board of Plastic Free Campus





Pradnya Niketan Education Society's
**NAGESH KARAJAGI ORCHID COLLEGE OF
ENGINEERING & TECHNOLOGY, SOLAPUR**

NAAC Accredited, Approved by AICTE, New Delhi & Affiliated to DBATU, Lonere
E-mail : office@orchidengg.ac.in, Website : www.orchidengg.ac.in, Phone No. 9423084363
Post Box No. 154, Gut No. 16, Solapur-Tuljapur Road, Tale Hipparaga, Solapur- 413 002.



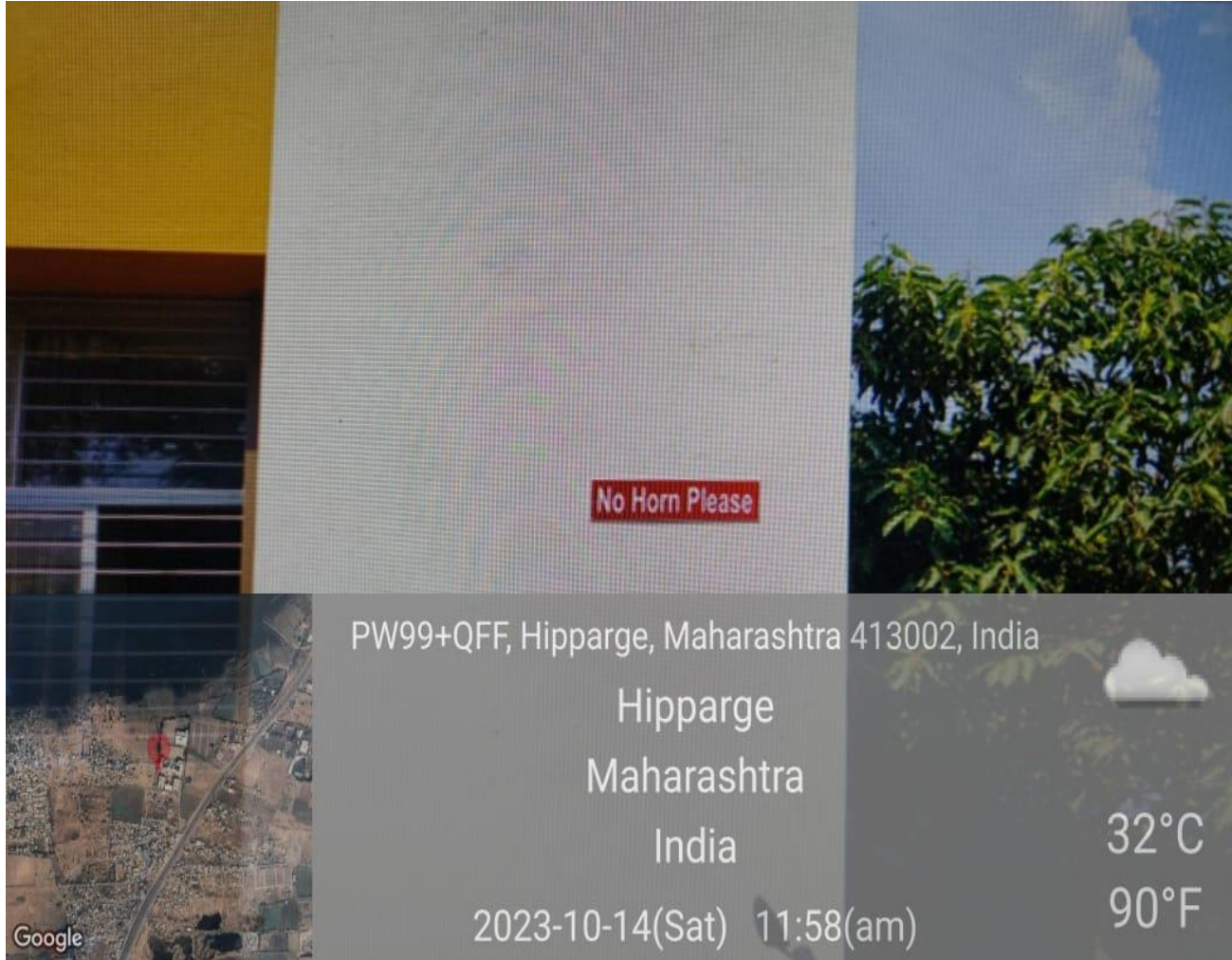
Sign board of No Parking





Pradnya Niketan Education Society's
**NAGESH KARAJAGI ORCHID COLLEGE OF
ENGINEERING & TECHNOLOGY, SOLAPUR**

NAAC Accredited, Approved by AICTE, New Delhi & Affiliated to DBATU, Lonere
E-mail : office@orchidengg.ac.in, Website : www.orchidengg.ac.in, Phone No. 9423084363
Post Box No. 154, Gut No. 16, Solapur-Tuljapur Road, Tale Hipparaga, Solapur- 413 002.



Sign board of No Horn Please





Pradnya Niketan Education Society's
**NAGESH KARAJAGI *ORCHID* COLLEGE OF
ENGINEERING & TECHNOLOGY, SOLAPUR**

NAAC Accredited, Approved by AICTE, New Delhi & Affiliated to DBATU, Lonere
E-mail : office@orchidengg.ac.in, Website : www.orchidengg.ac.in, Phone No. 9423084363
Post Box No. 154, Gut No. 16, Solapur-Tuljapur Road, Tale Hipparaga, Solapur- 413 002.

5) Disabled friendly and barrier friendly environment





Pradnya Niketan Education Society's
**NAGESH KARAJAGI ORCHID COLLEGE OF
ENGINEERING & TECHNOLOGY, SOLAPUR**

NAAC Accredited, Approved by AICTE, New Delhi & Affiliated to DBATU, Lonere
E-mail : office@orchidengg.ac.in, Website : www.orchidengg.ac.in, Phone No. 9423084363
Post Box No. 154, Gut No. 16, Solapur-Tuljapur Road, Tale Hipparaga, Solapur- 413 002.



Figure 52: Ramps for Wheelchair with rails

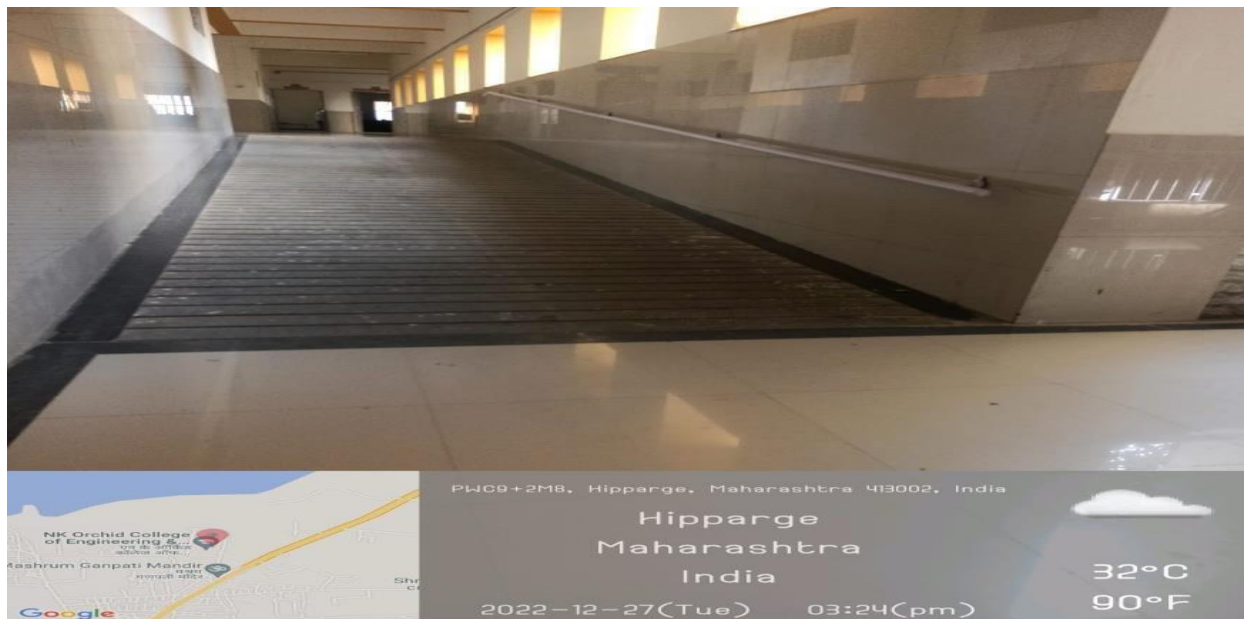


Figure 53: Ramps for Wheel Chair with rails





Pradnya Niketan Education Society's
**NAGESH KARAJAGI ORCHID COLLEGE OF
ENGINEERING & TECHNOLOGY, SOLAPUR**

NAAC Accredited, Approved by AICTE, New Delhi & Affiliated to DBATU, Lonere
E-mail : office@orchidengg.ac.in, Website : www.orchidengg.ac.in, Phone No. 9423084363
Post Box No. 154, Gut No. 16, Solapur-Tuljapur Road, Tale Hipparaga, Solapur- 413 002.



Figure 54: Ramps for Wheelchair with rails



Figure 55: Ramps for Wheelchair with rails





Pradnya Niketan Education Society's
**NAGESH KARAJAGI ORCHID COLLEGE OF
ENGINEERING & TECHNOLOGY, SOLAPUR**

NAAC Accredited, Approved by AICTE, New Delhi & Affiliated to DBATU, Lonere
E-mail : office@orchidengg.ac.in, Website : www.orchidengg.ac.in, Phone No. 9423084363
Post Box No. 154, Gut No. 16, Solapur-Tuljapur Road, Tale Hipparaga, Solapur- 413 002.



Figure 56: Washroom for the Divyangjan



Figure 57: Wheelchair for the Divyangjan

